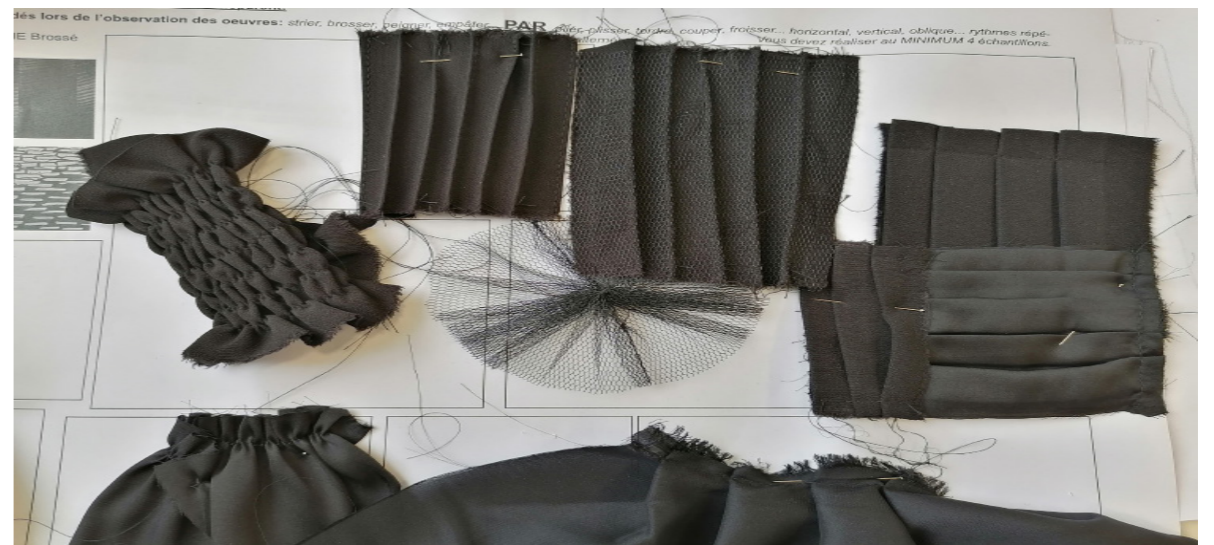
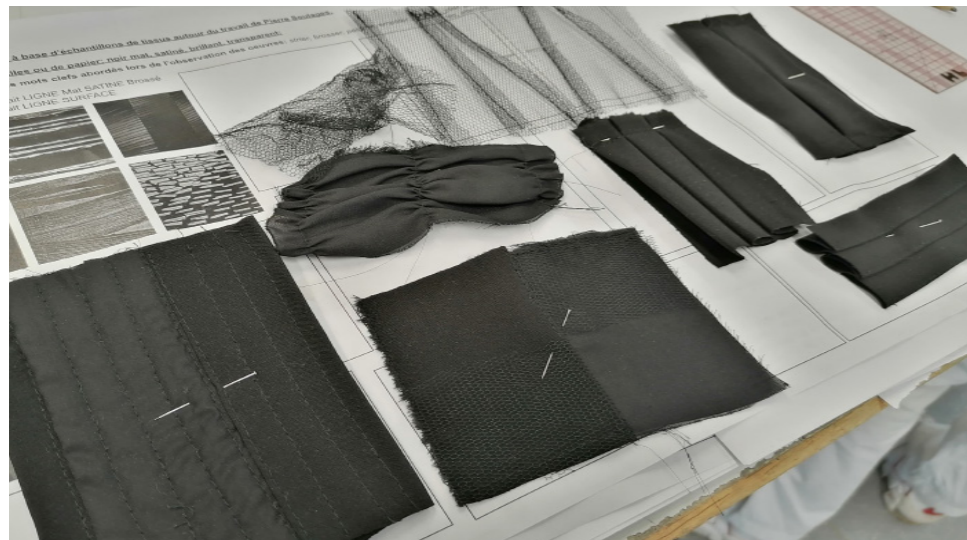
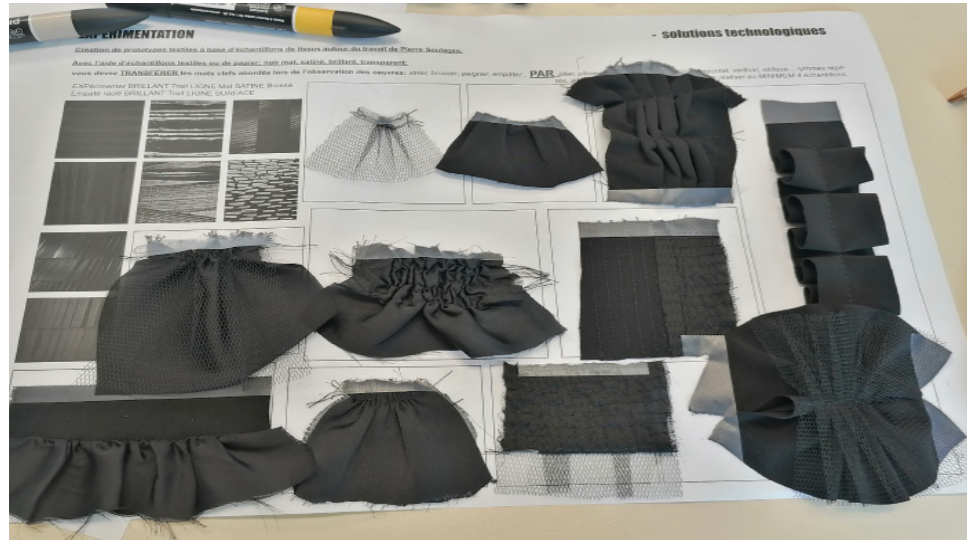


VOUS AVEZ DIT NOIR ?

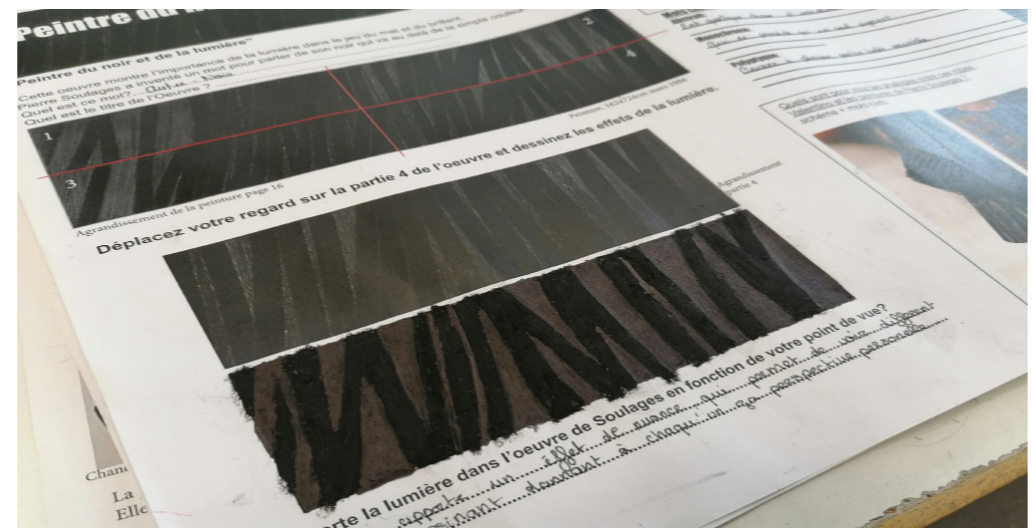
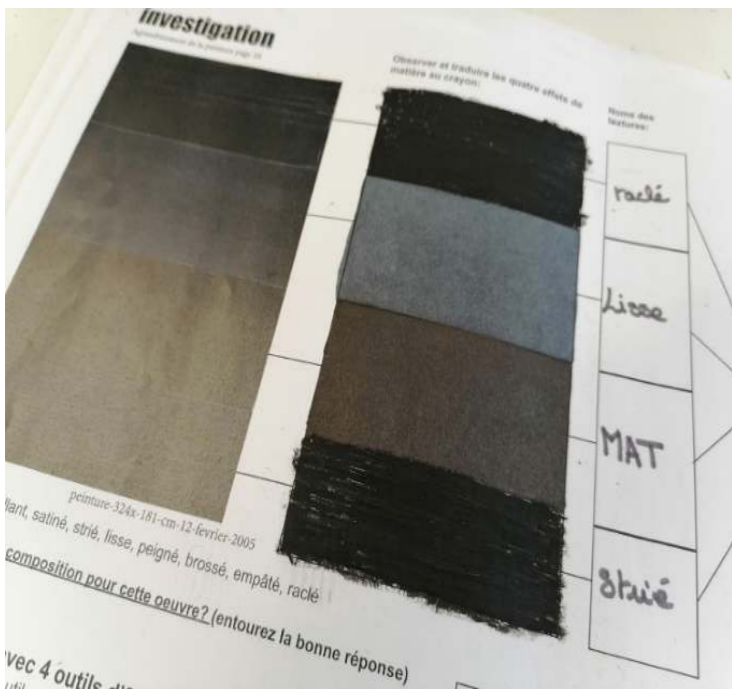
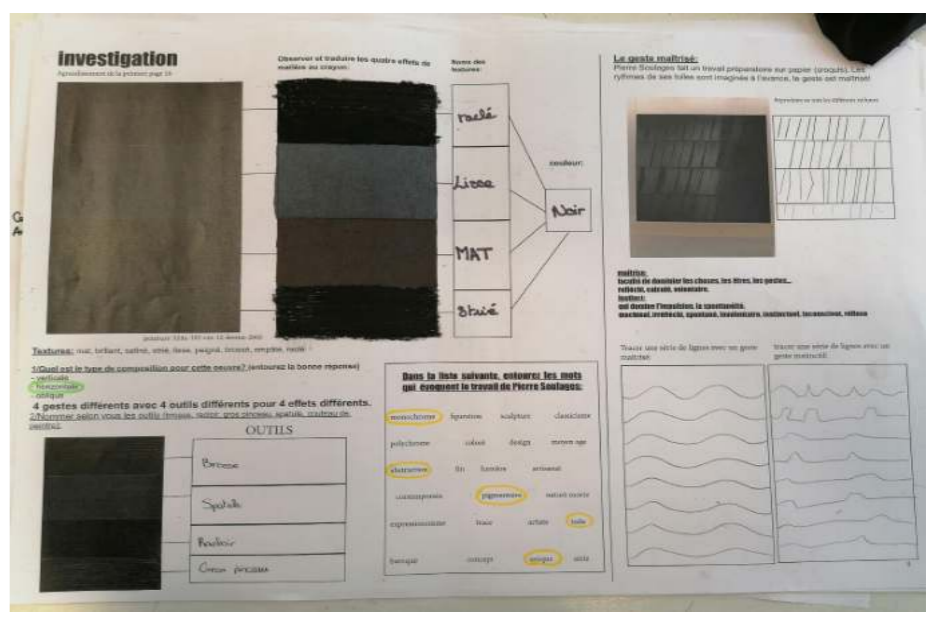
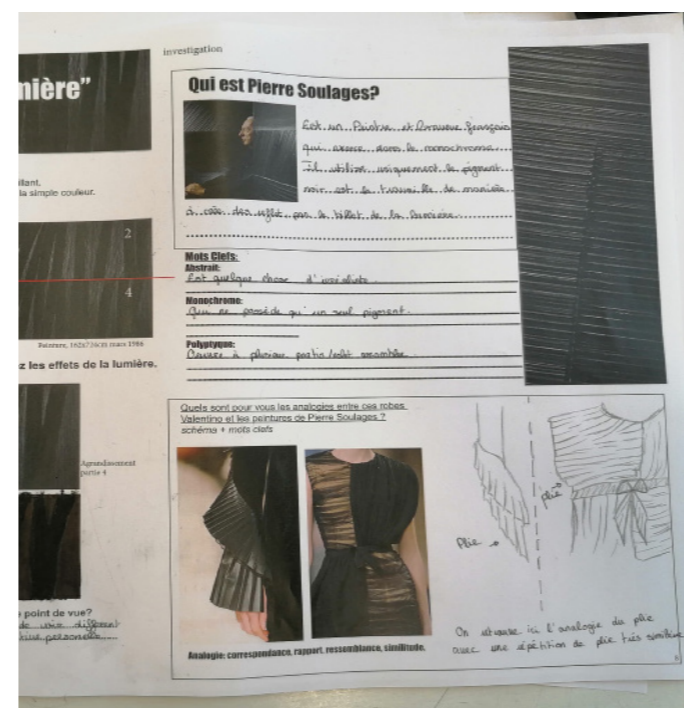
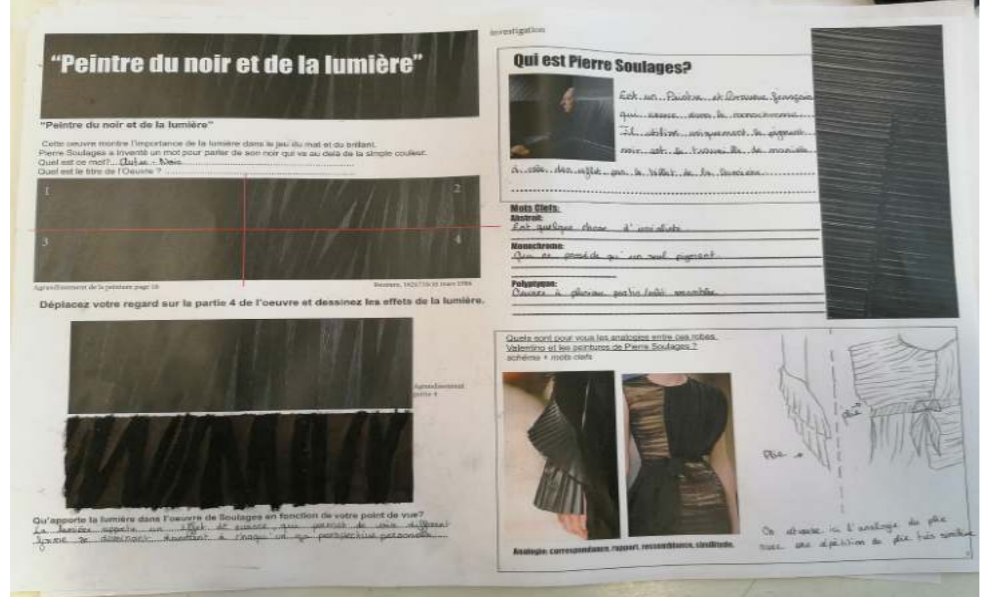
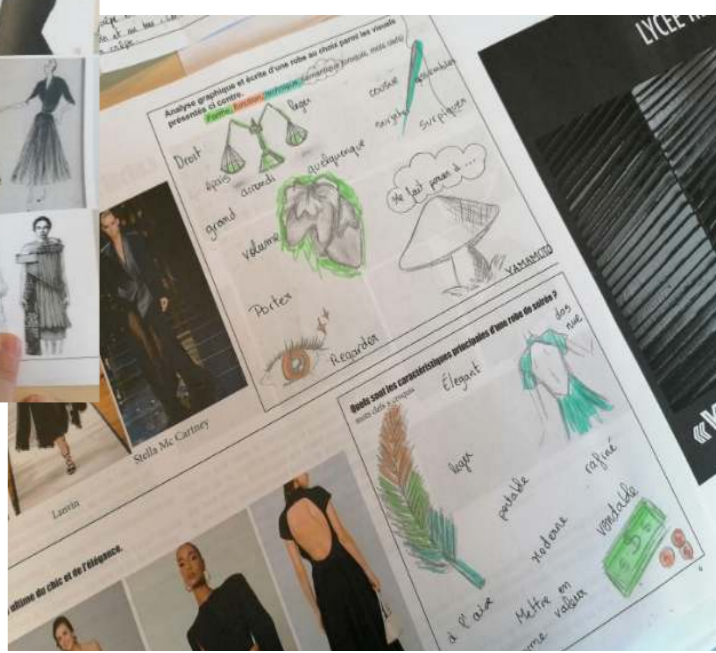
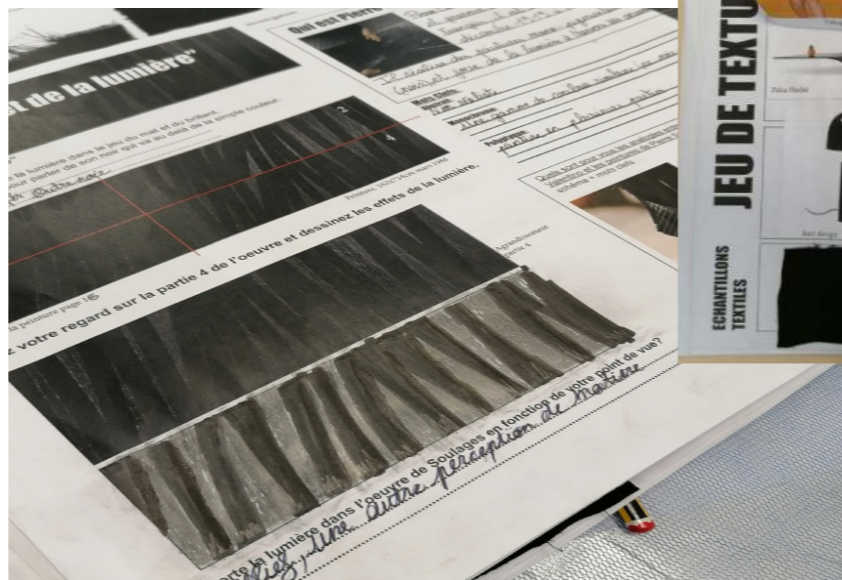
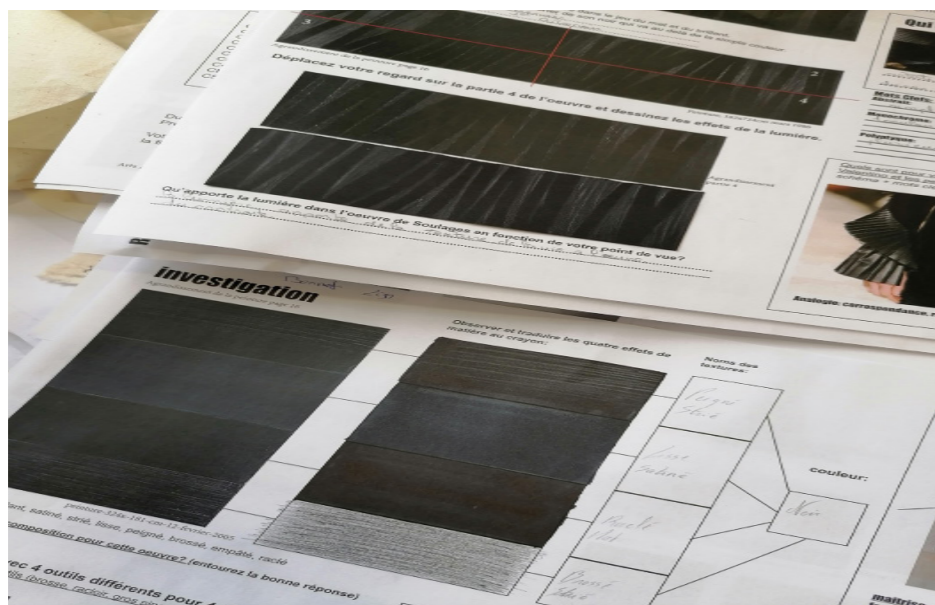
SUJET 120 HEURES 2022

bac pro mmv Lycee hemingway Nimes

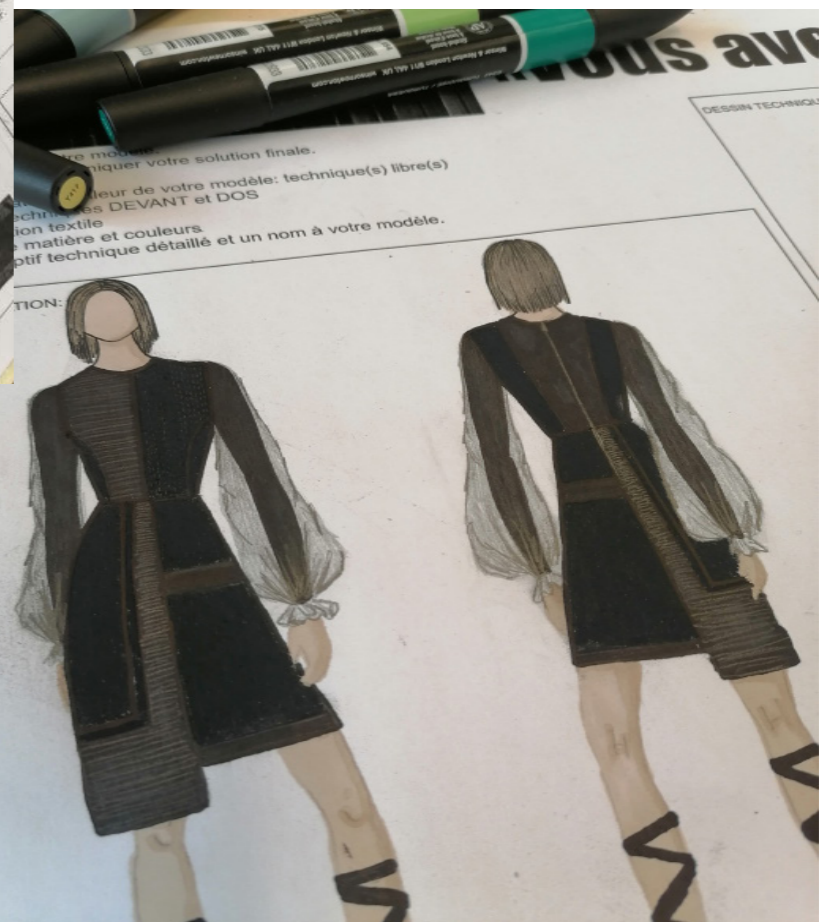
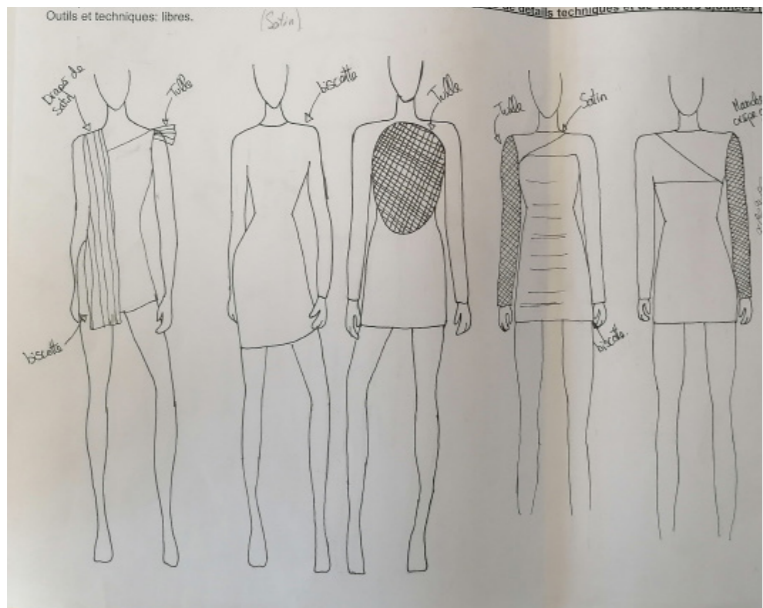
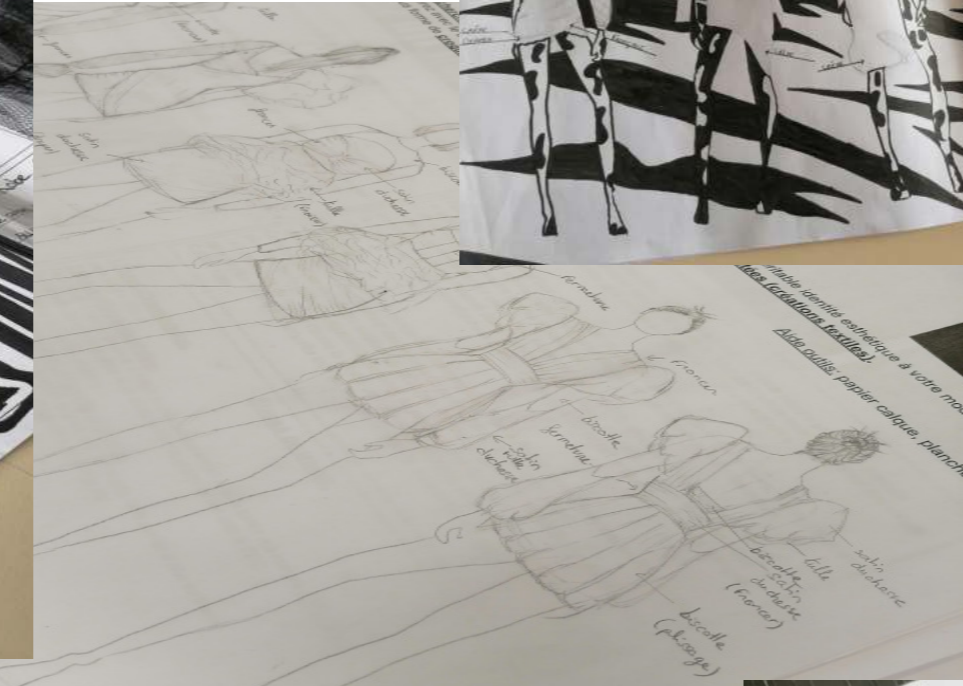
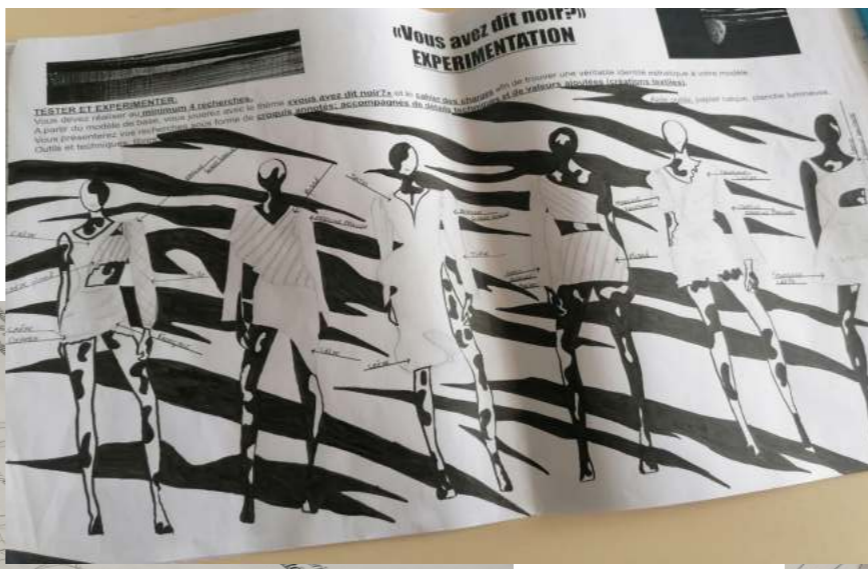
experimentations textiles
satin , crepe, tulle



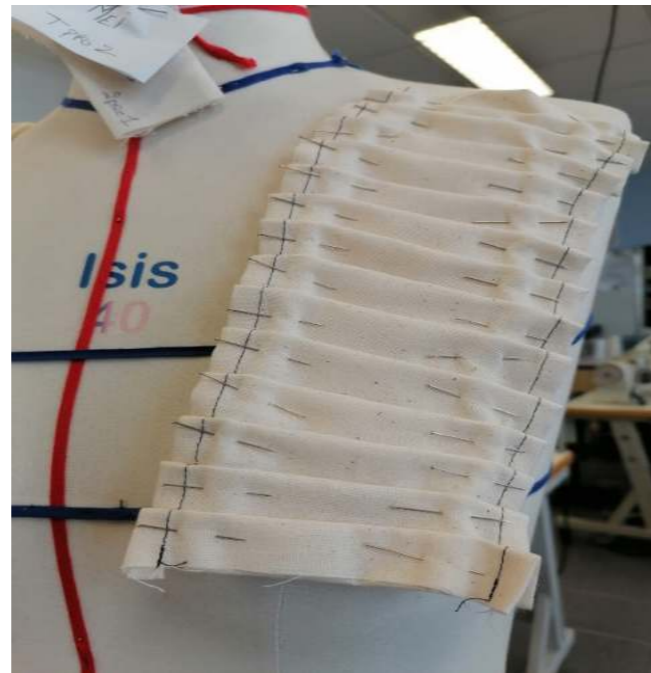
Experimentations graphiques autour du travail des peintures de Pierre Soulages



RECHERCHES GRAPHIQUES



**RECHERCHES
MOULAGE**



**Quelques réalisations
bravo aux élèves...**

